

Discharge Measurement Summary

Site name WCanal10
Site number 01
Operator(s) VAllen
File name WestCanal_20230721_0942.ft
Comment

Start time	7/21/2023 9:42 AM	Sensor type	Top Setting
End time	7/21/2023 10:39 AM	Handheld serial number	FT2H2219029
Start location latitude	42.810	Probe serial number	FT2P2219014
Start location longitude	-118.871	Probe firmware	1.30
Calculations engine	FlowTracker2	Handheld software	1.7

# Stations	Avg interval (s)	Total discharge (m³/s)
25	40	0.4664

Total width (m)	Total area (m²)	Wetted Perimeter (m)
4.877	2.64407	5.305

Mean SNR (dB)	Mean depth (m)	Mean velocity (m/s)
36	0.542	0.1764

Mean temp (°C)	Max depth (m)	Max velocity (m/s)
17.479	0.735	0.3283

Discharge Uncertainty		
Category	ISO	IVE
Accuracy	1.0%	1.0%
Depth	0.1%	1.1%
Velocity	1.9%	2.5%
Width	0.1%	0.1%
Method	0.9%	
# Stations	2.0%	
Overall	3.1%	2.9%

Discharge equation	Mid Section
Discharge uncertainty	IVE
Discharge reference	Rated

Data Collection Settings	
Salinity	0.000 PSS-78
Temperature	-
Sound speed	-
Mounting correction	0.000 %

Summary overview

No changes were made to this file
Quality control warnings



Discharge Measurement Summary

Site name WCanal10
Site number 01
Operator(s) VAllen
File name WestCanal_20230721_0942.ft
Comment

Station Warning Settings

Station discharge OK

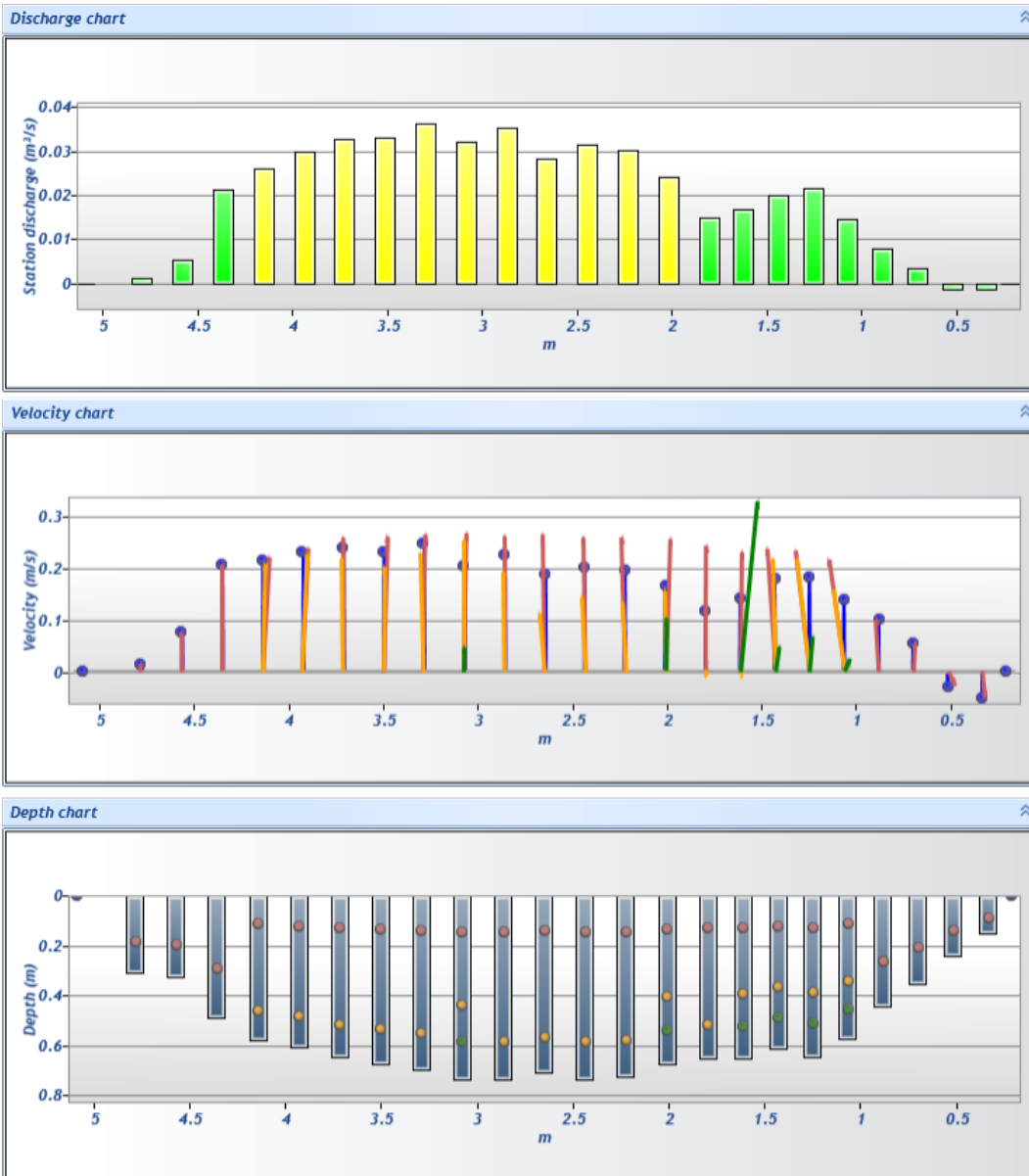
Station discharge < 5.00%

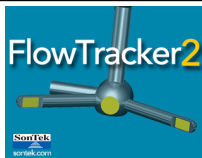
Station discharge caution

5.00% >= Station discharge < 10.00%

Station discharge warning

Station discharge >= 10.00%



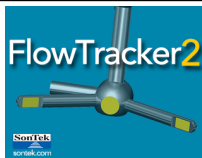


Discharge Measurement Summary

Site name WCanal10
Site number 01
Operator(s) VAllen
File name WestCanal_20230721_0942.ft
Comment

Measurement results

St#	Time	Location (m)	Method	Depth (m)	%Depth	Measured Depth (m)	Samples	Velocity (m/s)	Correction	Mean Velocity (m/s)	Area (m ²)	Flow (m ³ /s)	%Q	
0	9:42 AM	0.213	None	0.000	0.0000	0.000	0	0.0000	1.0000	-0.0507	0.00000	0.0000	0.00	✓
1	9:43 AM	0.335	0.6	0.149	0.6000	0.090	80	-0.0507	1.0000	-0.0507	0.02276	-0.0012	-0.25	✓
2	9:44 AM	0.518	0.6	0.238	0.6000	0.143	80	-0.0274	1.0000	-0.0274	0.04348	-0.0012	-0.26	✓
3	9:46 AM	0.701	0.6	0.351	0.6000	0.210	80	0.0552	1.0000	0.0552	0.06410	0.0035	0.76	✓
4	9:47 AM	0.884	0.6	0.439	0.6000	0.263	80	0.1008	1.0000	0.1008	0.08027	0.0081	1.74	✓
5	9:49 AM	1.067	0.2/0.6/0.8	0.573	0.2000	0.115	80	0.2161	1.0000	0.1394	0.10479	0.0146	3.13	✓
5	9:49 AM	1.067	0.2/0.6/0.8	0.573	0.6000	0.344	80	0.1582	1.0000	0.1394	0.10479	0.0146	3.13	✓
5	9:49 AM	1.067	0.2/0.6/0.8	0.573	0.8000	0.458	80	0.0250	1.0000	0.1394	0.10479	0.0146	3.13	✓
6	9:52 AM	1.250	0.2/0.6/0.8	0.643	0.2000	0.129	80	0.2334	1.0000	0.1838	0.11762	0.0216	4.63	✓
6	9:52 AM	1.250	0.2/0.6/0.8	0.643	0.6000	0.386	80	0.2167	1.0000	0.1838	0.11762	0.0216	4.63	✓
6	9:52 AM	1.250	0.2/0.6/0.8	0.643	0.8000	0.515	80	0.0683	1.0000	0.1838	0.11762	0.0216	4.63	✓
7	9:56 AM	1.433	0.2/0.6/0.8	0.613	0.2000	0.123	80	0.2367	1.0000	0.1801	0.11204	0.0202	4.33	✓
7	9:56 AM	1.433	0.2/0.6/0.8	0.613	0.6000	0.368	80	0.2173	1.0000	0.1801	0.11204	0.0202	4.33	✓
7	9:56 AM	1.433	0.2/0.6/0.8	0.613	0.8000	0.490	80	0.0489	1.0000	0.1801	0.11204	0.0202	4.33	✓
8	10:00 AM	1.615	0.2/0.6/0.8	0.652	0.2000	0.130	80	0.2304	1.0000	0.1417	0.11929	0.0169	3.62	✓
8	10:00 AM	1.615	0.2/0.6/0.8	0.652	0.6000	0.391	80	0.0041	1.0000	0.1417	0.11929	0.0169	3.62	✓
8	10:00 AM	1.615	0.2/0.6/0.8	0.652	0.8000	0.522	80	0.3283	1.0000	0.1417	0.11929	0.0169	3.62	✓
9	10:04 AM	1.798	0.2/0.8	0.649	0.2000	0.130	80	0.2432	1.0000	0.1166	0.12862	0.0150	3.22	✓
9	10:04 AM	1.798	0.2/0.8	0.649	0.8000	0.519	80	-0.0101	1.0000	0.1166	0.12862	0.0150	3.22	✓
10	10:06 AM	2.012	0.2/0.6/0.8	0.674	0.2000	0.135	80	0.2556	1.0000	0.1677	0.14372	0.0241	5.17	✓
10	10:06 AM	2.012	0.2/0.6/0.8	0.674	0.6000	0.404	80	0.1570	1.0000	0.1677	0.14372	0.0241	5.17	✓
10	10:06 AM	2.012	0.2/0.6/0.8	0.674	0.8000	0.539	80	0.1012	1.0000	0.1677	0.14372	0.0241	5.17	✓
11	10:10 AM	2.225	0.2/0.8	0.722	0.2000	0.144	80	0.2594	1.0000	0.1964	0.15413	0.0303	6.49	✓
11	10:10 AM	2.225	0.2/0.8	0.722	0.8000	0.578	80	0.1335	1.0000	0.1964	0.15413	0.0303	6.49	✓
12	10:12 AM	2.438	0.2/0.8	0.732	0.2000	0.146	80	0.2590	1.0000	0.2015	0.15608	0.0315	6.74	✓
12	10:12 AM	2.438	0.2/0.8	0.732	0.8000	0.585	80	0.1440	1.0000	0.2015	0.15608	0.0315	6.74	✓
13	10:15 AM	2.652	0.2/0.8	0.707	0.2000	0.141	80	0.2650	1.0000	0.1886	0.15087	0.0285	6.10	✓
13	10:15 AM	2.652	0.2/0.8	0.707	0.8000	0.566	80	0.1122	1.0000	0.1886	0.15087	0.0285	6.10	✓
14	10:17 AM	2.865	0.2/0.8	0.735	0.2000	0.147	80	0.2614	1.0000	0.2269	0.15673	0.0356	7.63	✓
14	10:17 AM	2.865	0.2/0.8	0.735	0.8000	0.588	80	0.1925	1.0000	0.2269	0.15673	0.0356	7.63	✓
15	10:20 AM	3.078	0.2/0.6/0.8	0.732	0.2000	0.146	80	0.2669	1.0000	0.2057	0.15608	0.0321	6.88	✓
15	10:20 AM	3.078	0.2/0.6/0.8	0.732	0.6000	0.439	80	0.2538	1.0000	0.2057	0.15608	0.0321	6.88	✓
15	10:20 AM	3.078	0.2/0.6/0.8	0.732	0.8000	0.585	80	0.0483	1.0000	0.2057	0.15608	0.0321	6.88	✓
16	10:23 AM	3.292	0.2/0.8	0.692	0.2000	0.138	80	0.2650	1.0000	0.2470	0.14762	0.0365	7.82	✓
16	10:23 AM	3.292	0.2/0.8	0.692	0.8000	0.554	80	0.2291	1.0000	0.2470	0.14762	0.0365	7.82	✓
17	10:25 AM	3.505	0.2/0.8	0.671	0.2000	0.134	80	0.2606	1.0000	0.2312	0.14307	0.0331	7.09	✓
17	10:25 AM	3.505	0.2/0.8	0.671	0.8000	0.536	80	0.2018	1.0000	0.2312	0.14307	0.0331	7.09	✓
18	10:27 AM	3.719	0.2/0.8	0.646	0.2000	0.129	80	0.2589	1.0000	0.2389	0.13787	0.0329	7.06	✓
18	10:27 AM	3.719	0.2/0.8	0.646	0.8000	0.517	80	0.2188	1.0000	0.2389	0.13787	0.0329	7.06	✓
19	10:30 AM	3.932	0.2/0.8	0.607	0.2000	0.121	80	0.2378	1.0000	0.2322	0.12941	0.0301	6.44	✓
19	10:30 AM	3.932	0.2/0.8	0.607	0.8000	0.485	80	0.2267	1.0000	0.2322	0.12941	0.0301	6.44	✓
20	10:32 AM	4.145	0.2/0.8	0.576	0.2000	0.115	80	0.2201	1.0000	0.2141	0.12291	0.0263	5.64	✓
20	10:32 AM	4.145	0.2/0.8	0.576	0.8000	0.461	80	0.2081	1.0000	0.2141	0.12291	0.0263	5.64	✓
21	10:34 AM	4.359	0.6	0.488	0.6000	0.293	80	0.2059	1.0000	0.2059	0.10405	0.0214	4.59	✓
22	10:36 AM	4.572	0.6	0.326	0.6000	0.196	80	0.0760	1.0000	0.0760	0.06958	0.0053	1.13	✓
23	10:37 AM	4.785	0.6	0.305	0.6000	0.183	80	0.0159	1.0000	0.0159	0.07897	0.0013	0.27	✓
24	10:39 AM	5.090	None	0.000	0.0000	0.000	0	0.0000	1.0000	0.0159	0.00000	0.0000	0.00	✓



Discharge Measurement Summary

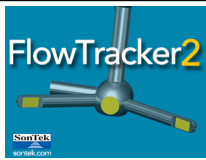
Site name WCanal10
Site number 01
Operator(s) VAllen
File name WestCanal_20230721_0942.ft
Comment

Quality Control Settings

Maximum depth change 50.00%
Maximum spacing change 100.00%
SNR threshold 10 dB
Standard error threshold 0.0100 m/s
Spike threshold 10.00%
Maximum velocity angle 20.0 deg
Maximum tilt angle 5.0 deg

Quality control warnings

St#	Time	Location (m)	Method	Depth (m)	%Depth	Measured Depth (m)	Warnings
1	9:43 AM	0.335	0.6	0.149	0.6000	0.090	SNR Threshold Variation, Velocity Angle > QC
2	9:44 AM	0.518	0.6	0.238	0.6000	0.143	Velocity Angle > QC
4	9:47 AM	0.884	0.6	0.439	0.6000	0.263	Large SNR Variation
5	9:49 AM	1.067	0.2/0.6/0.8	0.573	0.2000	0.115	Velocity Angle > QC
5	9:49 AM	1.067	0.2/0.6/0.8	0.573	0.6000	0.344	Velocity Angle > QC
5	9:49 AM	1.067	0.2/0.6/0.8	0.573	0.8000	0.458	Velocity Angle > QC
7	9:56 AM	1.433	0.2/0.6/0.8	0.613	0.2000	0.123	Large SNR Variation, SNR Threshold Variation, Velocity Angle > QC
7	9:56 AM	1.433	0.2/0.6/0.8	0.613	0.6000	0.368	Large SNR Variation, SNR Threshold Variation, Velocity Angle > QC
7	9:56 AM	1.433	0.2/0.6/0.8	0.613	0.8000	0.490	Large SNR Variation, SNR Threshold Variation, Velocity Angle > QC
8	10:00 AM	1.615	0.2/0.6/0.8	0.652	0.2000	0.130	Low SNR, SNR Threshold Variation, Standard Error > QC
8	10:00 AM	1.615	0.2/0.6/0.8	0.652	0.6000	0.391	Low SNR, SNR Threshold Variation, Standard Error > QC
8	10:00 AM	1.615	0.2/0.6/0.8	0.652	0.8000	0.522	Low SNR, SNR Threshold Variation, Standard Error > QC
9	10:04 AM	1.798	0.2/0.8	0.649	0.2000	0.130	Low SNR, SNR Threshold Variation, Standard Error > QC
9	10:04 AM	1.798	0.2/0.8	0.649	0.8000	0.519	Low SNR, SNR Threshold Variation, Standard Error > QC
10	10:06 AM	2.012	0.2/0.6/0.8	0.674	0.2000	0.135	Low SNR, Beam SNRs Not Similar, SNR Threshold Variation, Standard Error > QC, High % Spikes
10	10:06 AM	2.012	0.2/0.6/0.8	0.674	0.6000	0.404	Low SNR, Beam SNRs Not Similar, SNR Threshold Variation, Standard Error > QC, High % Spikes
10	10:06 AM	2.012	0.2/0.6/0.8	0.674	0.8000	0.539	Low SNR, Beam SNRs Not Similar, SNR Threshold Variation, Standard Error > QC, High % Spikes
14	10:17 AM	2.865	0.2/0.8	0.735	0.2000	0.147	Boundary Interference, Low SNR, Approaching Low SNR, SNR Threshold Variation
14	10:17 AM	2.865	0.2/0.8	0.735	0.8000	0.588	Boundary Interference, Low SNR, Approaching Low SNR, SNR Threshold Variation
16	10:23 AM	3.292	0.2/0.8	0.692	0.2000	0.138	High % Spikes
16	10:23 AM	3.292	0.2/0.8	0.692	0.8000	0.554	High % Spikes
23	10:37 AM	4.785	0.6	0.305	0.6000	0.183	SNR Threshold Variation
24	10:39 AM	5.090	None	0.000	0.0000	0.000	Water Depth > QC



Discharge Measurement Summary

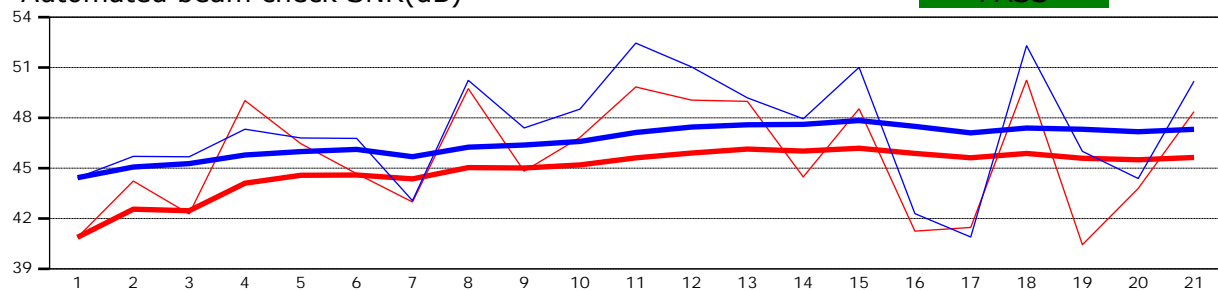
Site name WCanal10
Site number 01
Operator(s) VAllen
File name WestCanal_20230721_0942.ft
Comment

Beam 1	
Beam 2	

Automated beam check Start time 7/21/2023 9:40:51 AM

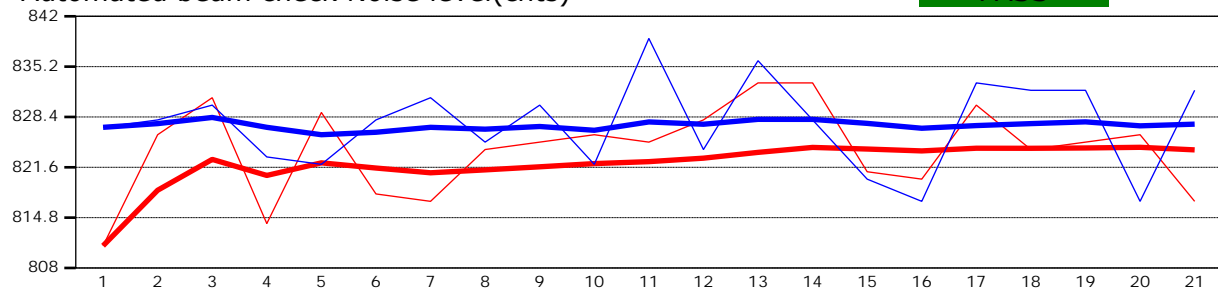
Automated beam check SNR(dB)

PASS



Automated beam check Noise level(cnts)

PASS



Automated beam check Quality control warnings

No quality control warnings



Discharge Measurement Summary

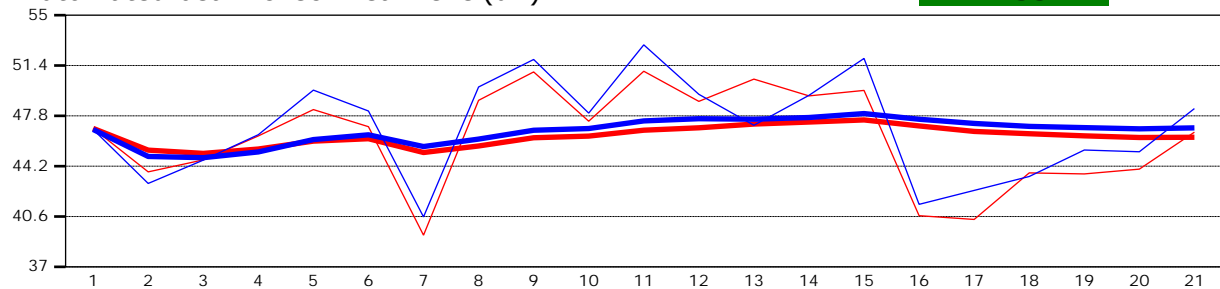
Site name WCanal10
Site number 01
Operator(s) VAllen
File name WestCanal_20230721_0942.ft
Comment

Beam 1	
Beam 2	

Automated beam check Start time 7/21/2023 9:40:51 AM

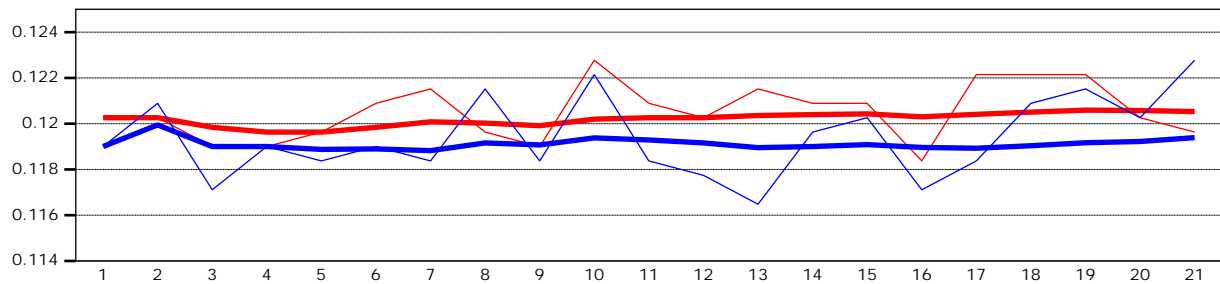
Automated beam check Peak level(dB)

PASS



Automated beam check Peak position(m)

PASS



Automated beam check Quality control warnings

No quality control warnings